

PR HOFFMAN MACHINE PRODUCTS:

Innovations in Flatness

Servo RSTM 6600 Series

Since 1938

Double-Sided Planetary Lapping/Polishing Machine



453 LINCOLN ST.

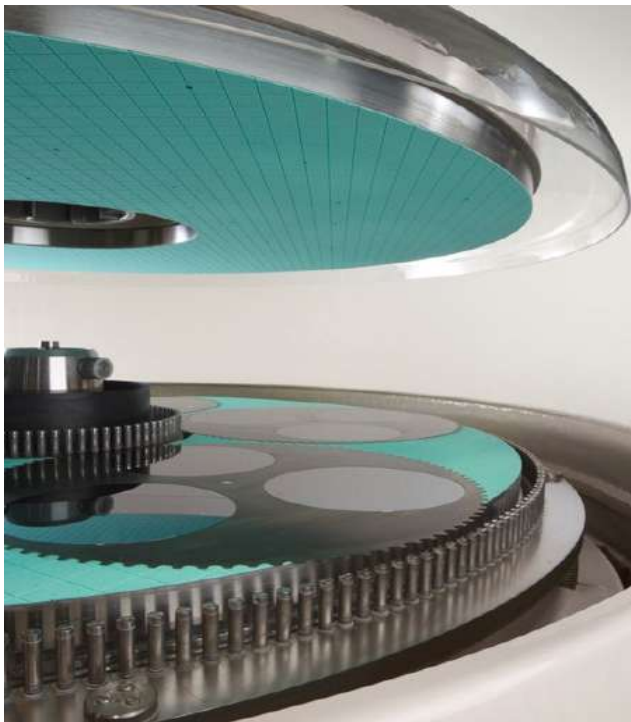
CARLISLE, PA 17013 USA

TEL: 1 717-243-9900 FAX: 1 717-243-4542

WWW.PRHOFFMAN.COM

Servo **RS**[™] 6600 Series

Double-Sided Planetary Lapping/Polishing Machine



The PR Hoffman **Servo RS**[™] 6600 Series double side lapping and polishing machine is our largest machine and can be adapted to finish many different materials. With a large plate track owners can expect flatter parts and higher throughput. The 6600 is perfectly suited for large thin parts that require fast, gentle processing. The planetary action simultaneously removes equal amounts of material from both sides of the pieces. Precise, asymmetrical removal can also be programmed when needed.

The **Servo RS**[™] 6600 planetary lapping and polishing machine can be modified to meet your processing requirements with the addition of a wide variety of optional accessories.

Standard Features

- Large plate track helps achieve flatter parts.
- Extra plate thickness helps prevent distortion from heat and force, resulting in a flatter lapping or polishing surface.
- Cast iron lapping plates with stainless steel ring and center sprockets with pin drive.
- Windows® touch screen display for editing unlimited 14 step recipes.
- Motor ramp-up time can be programmed for up to three minutes which is ideal for thin, fragile parts.
- Asymmetrical top to bottom removal ratio is easily programmed for ratios up to 50:1.
- The controller constantly adjusts the downforce based on feedback from a load cell that is mounted on the top plate drive shaft.
- The lapping force range is from 150 to 2,200 pounds (68 to 1,000 Kg).
- A variable speed peristaltic pump feeds slurry or coolant to the process.
- The 6600, as delivered, is fully programmed for process control and for lapping plate or polishing pad conditioning.

Why Choose a ServoRS™ 6600?



Better Parts



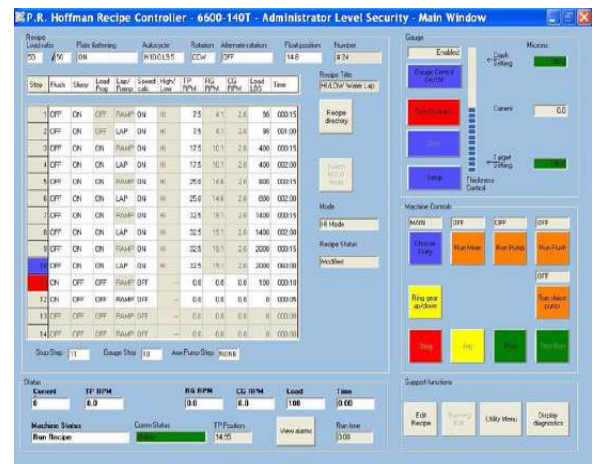
Faster Results

Recipe	Plan	Autoclave	Rotator	Alternator	Fluidgas						
Load/Info	Battery	W/DCLSS	CCW	rotator	14.6						
Stop	Flush	Skew	Load	Speed	High	IP	FG	CG	Load	Time	
	Prog		Plate	Line	Low	IPM	IPM	IPM	LBS		
1	OFF	ON	OFF	RAMF	ON	HI	7.5	4.1	2.6	96	000:15
2	OFF	ON	OFF	LAP	ON	HI	2.8	4.1	2.6	96	001:00
3	OFF	ON	ON	RAMF	ON	HI	12.5	10.1	2.6	400	000:15
4	OFF	ON	ON	LAP	ON	HI	12.5	10.1	2.6	400	002:00
5	OFF	ON	ON	RAMF	ON	HI	25.0	7.4	2.6	800	000:15
6	OFF	ON	ON	LAP	ON	HI	25.0	7.4	2.6	800	002:00
7	OFF	ON	ON	RAMF	ON	HI	32.5	10.1	2.6	1400	000:15
8	OFF	ON	ON	LAP	ON	HI	32.5	10.1	2.6	1400	002:00
9	OFF	ON	ON	RAMF	ON	HI	32.5	10.1	2.6	2000	000:15
10	OFF	ON	ON	LAP	ON	HI	32.5	10.1	2.6	2000	000:15
11	ON	OFF	OFF	RAMF	OFF	OFF	0.0	0.0	0.0	100	000:10
12	ON	OFF	OFF	RAMF	OFF	OFF	0.0	0.0	0.0	0	000:05
13	OFF	OFF	OFF	RAMF	OFF	OFF	0.0	0.0	0.0	0	000:10
14	OFF	OFF	OFF	RAMF	OFF	OFF	0.0	0.0	0.0	0	000:10

Gentler Processing

Available Options

- Automatic sizing controls stops the machine when the wafer reaches its target thickness by way of a lapped quartz piece in the center of the carrier.
- Digital sizing control is fully integrated into the Windows® PC and approximates the part height by directly measuring the distance between the plates. Crash protection included.
 - Part out of carrier, crash protection senses a crash and stops the machine cycle. Available to purchase separately.
- Stainless steel roller pins reduce cost of ownership by providing smoother runs and reduced wear on carrier teeth.
- A self-contained chiller / heater system can maintain coolant temperatures for water cooled / heated plates.
- A wide variety of plates custom designed for your unique lapping or polishing environment.



Servo RS™ 6600 Series

Since 1938

Double-Sided Planetary Lapping/Polishing Machine

6600 Specifications			
Carriers	Tooth Type:	140 Tooth Sprocket Type	
	No. of Carriers:	4	
	Max Part Circle:	26.7"	[678.7mm]
	Root Dia:	27.7"	[703.6mm]
Floor Space	Left to Right:	121"	[307.3cm]
	Front to Back:	89"	[226cm]
	Height:	117"	[297cm]
	Shipping Height:	100"	[254cm]
Plates	OD:	66.00"	[1676mm]
	ID:	18.83"	[478.3mm]
	Track:	23.58"	[598.9mm]
Electric Utility	Top Plate Drive:	20 HP D.C	[15 KW]
	Ring Gear Drive:	7.5 HP D.C.	[5.6 KW]
	Center Gear Drive:	5 HP D.C.	[3.75 KW]
	Standard Voltage and Required Service:	480 VAC, 60 Hz, 3 phase, 50 amps	
		380 VAC, 50 Hz, 3 phase, 60 amps	
		<i>Optional: 208/230 VAC, 60 Hz, 3 phase, 100 amps</i>	
Weight	Machine weight:	18,000 pounds	[8164 kg]

Our largest machine, your best parts

The 6600 is perfectly suited to handle thin parts gently and process them quickly. It is our largest machine capable of handling parts up to 26.7" (678.7 mm) and as thin as 0.025" (0.635 mm) thick. The large plate track helps produce flatter, more consistent parts which gives operators peace of mind when running the machine.

The 6600 comes standard with a pin drive which improves cost of ownership. Pin drive reduces maintenance cost by allowing for the replacement of individual pins rather than a complete machined gear. Optional stainless steel roller pins improve carrier life and provide smoother runs.

Contact us :**prhoff@prhoffman.com****+1 (717) 243-9900****Your Success = Our Success**

Revised Aug. 2019

453 LINCOLN ST.

CARLISLE, PA 17013 USA

TEL: 1 717-243-9900 FAX: 1 717-243-4542

WWW.PRHOFFMAN.COM